

Longse

Product Show

More Secure More Intelligent

March / 2022

www.longse.com

FULL

COLOR

IP CAMERA

It is also colorful at night



Longse

Full Color-IP Camera

Capturing images in full color!



Full Color Night Vision

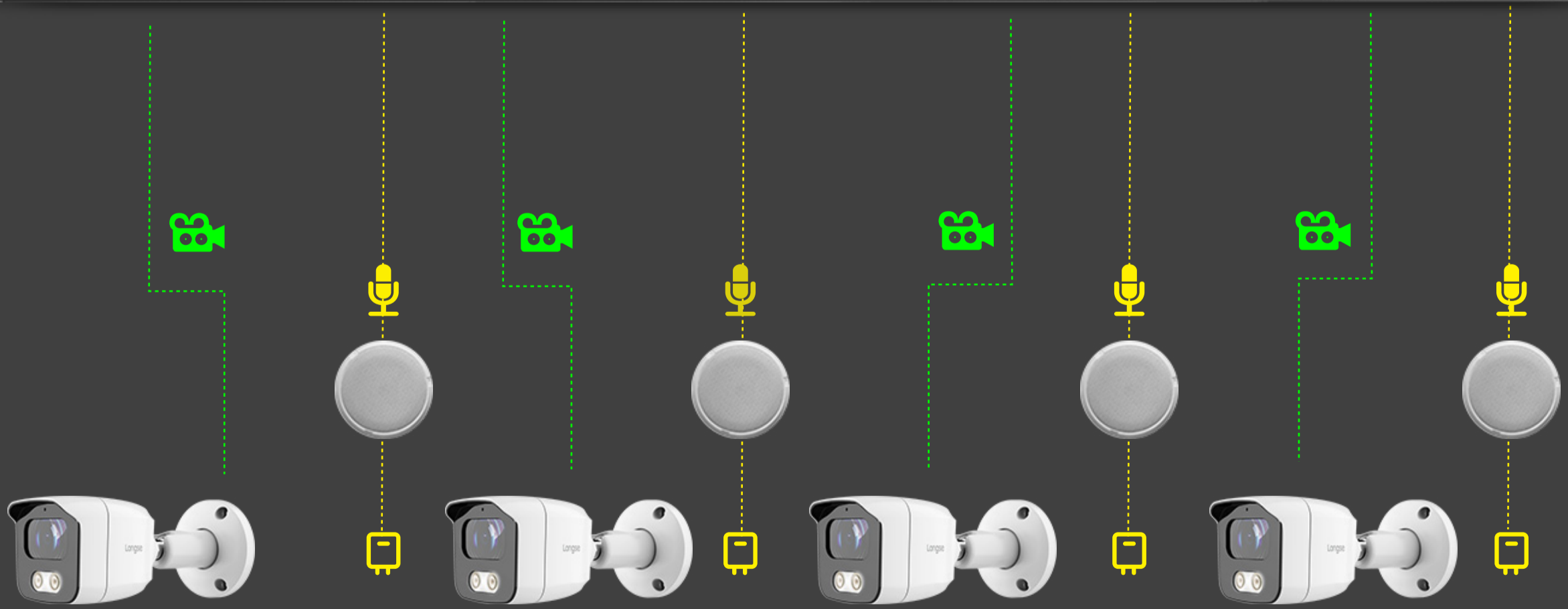
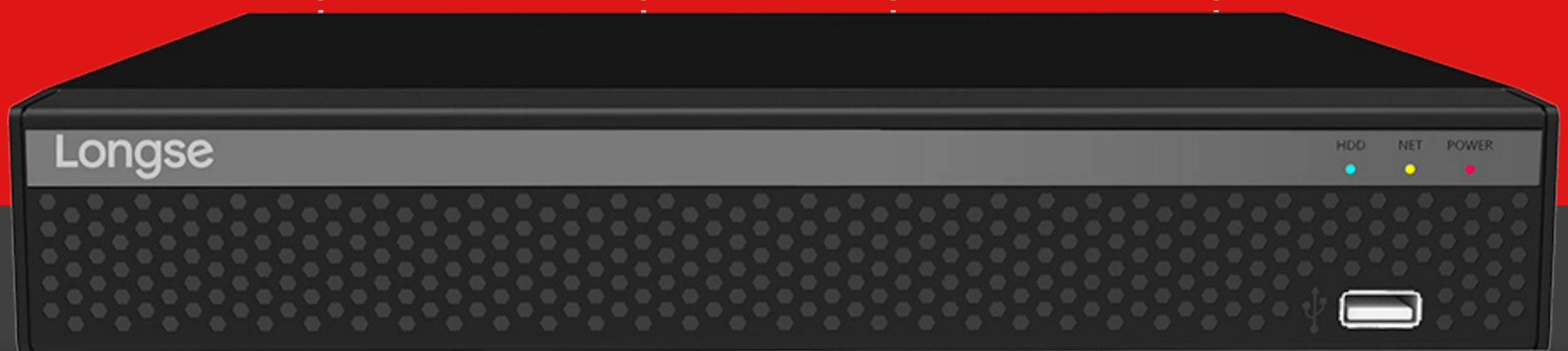
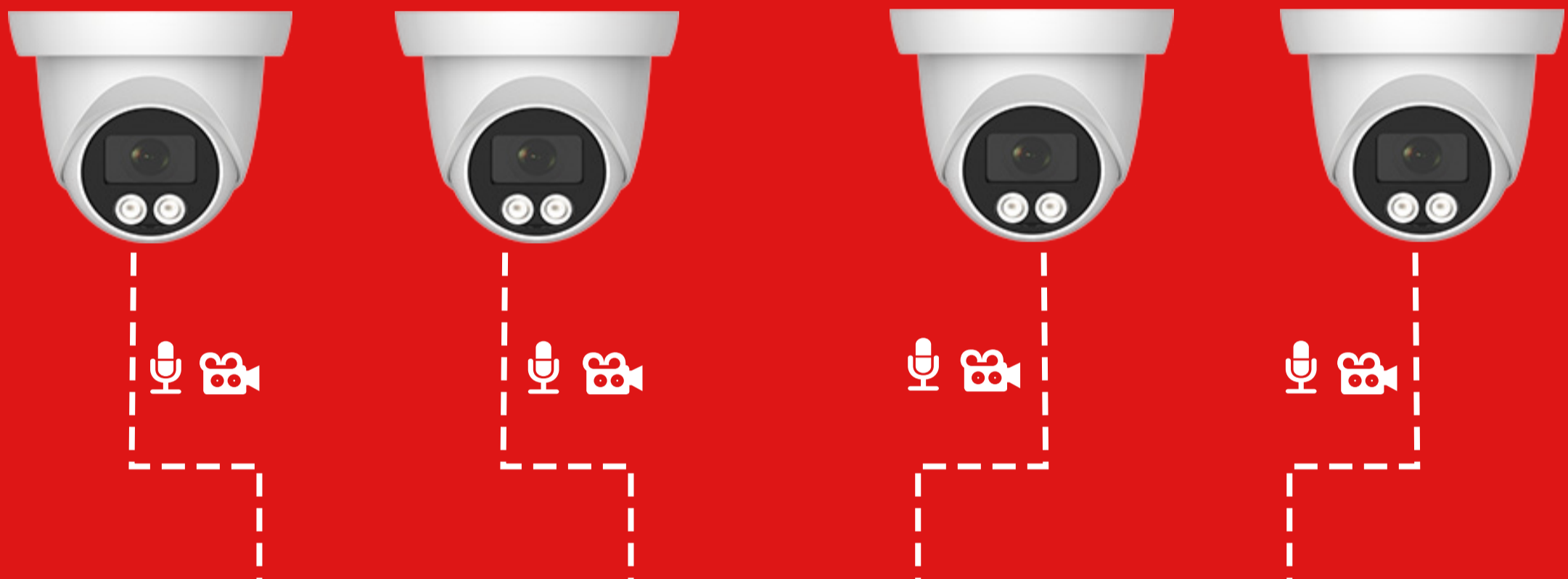
Full Color AOC XVR Kit

New



Camera

- × *Audio Adaptor*
- × *Audio Cabling*
- × *Outside Pick Up*

- ✓ *Easy Installation*
- ✓ *Cost Down*
- ✓ *Good Audio Effect*



Before


Power Adapter


Audio


Camera

Longse



GL500/GL500WH

NEW 5MP SOLUTION

GK7205V300+IMX335



Human Detection



Intrusion Detection

POE

With Internal POE



Audio

Optional Function



DWDR

Longse



GL50

Sony Sensor

5MP IPC

High Image Quality

Value Series | Full Color Series

GL500

5MP IPC

Value Series

Full Color Series



INTRUSION DETECTION

COMING SOON ! STAY TUNED !

Which is more convenient?

Ordinary
XVR Kits

VS

Full Color
AOC XVR Kits



Black & White Night Vision



Full Color Night Vision

Image



Outside Pick Up & Audio
Cabling & Audio Adaptor



Audio 1ch In & 1ch Out

Audio

IP Camera

Applicable Scenarios

More Secure, More Intelligent



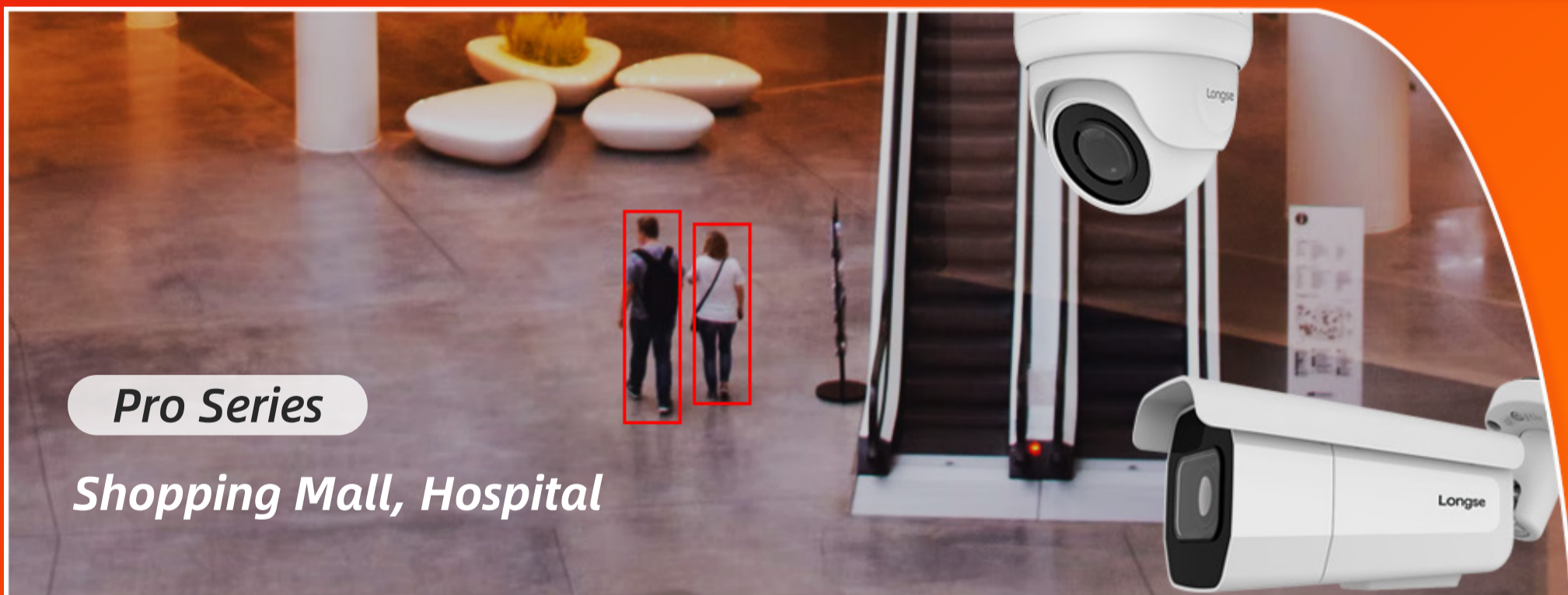
Value Series

Park, Plaza, Residence Community



Full Color Series

Rural Road, Tourist Attraction



Pro Series

Shopping Mall, Hospital



Motorized Varifocal Camera

Forest, Port, Railway

XVR

The product manager said

More and more users need human detection to make sure some dangerous areas are not strayed into by someone.

Human detection is used in conjunction with motion detection to alert intruders and filter out invalid reminders.



4K XVR



It can connect up to 8MP coaxial analog cameras or IP cameras.



It can save a lot of broadband and storage resources.



When detecting abnormal activity on the screen, it will start recording and push notifications.



It is easy to view surveillance videos.

4CH



4CH BNC Audio Alarm
Playback Human Detection
H.265/H.265+/H.264/H.264+

8CH



8CH BNC Audio Alarm
Playback Human Detection
H.265/H.265+/H.264/H.264+

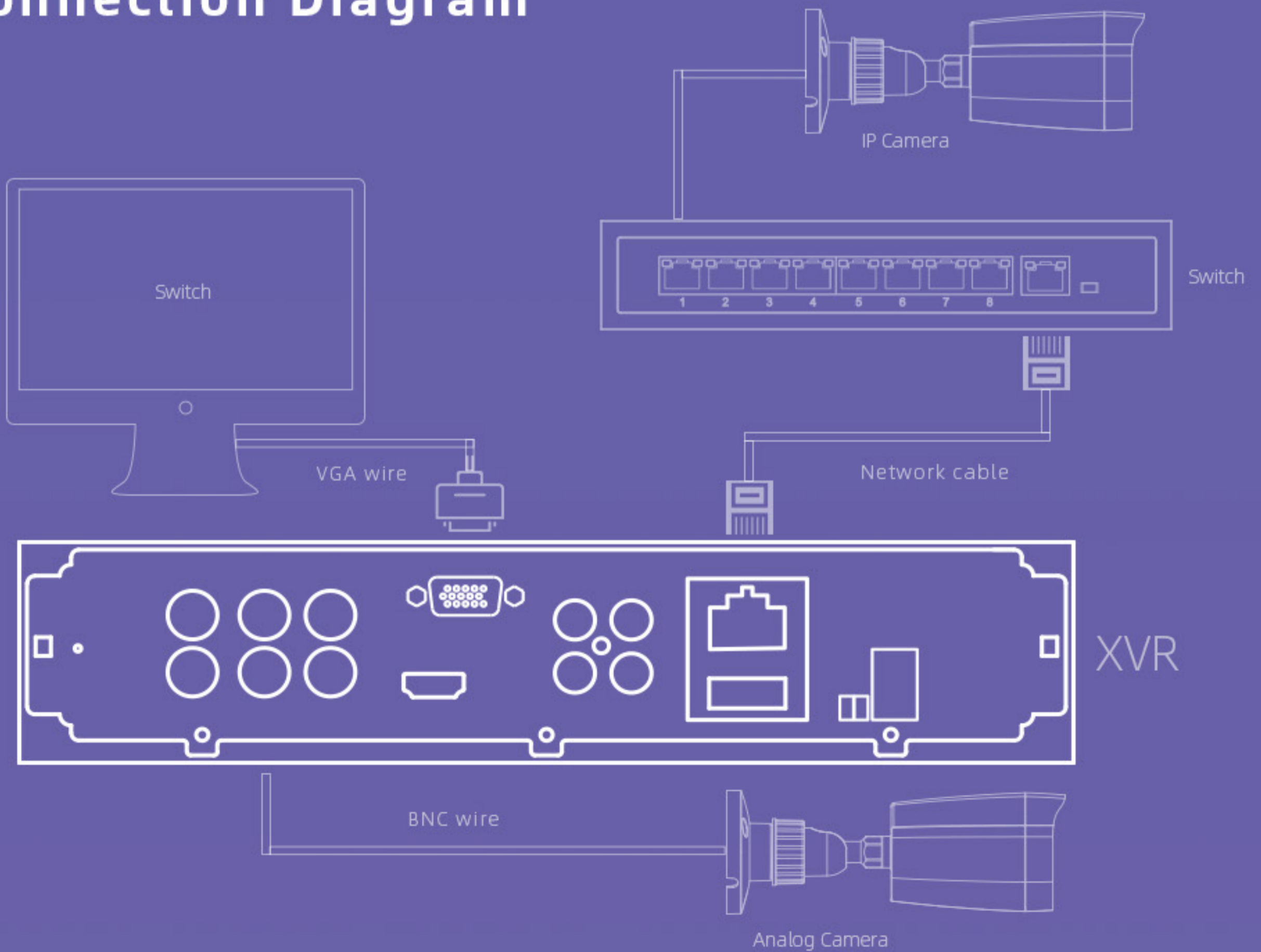
16CH



16CH BNC Audio Alarm
Playback Human Detection
H.265/H.265+/H.264/H.264+

Different models of XVR with different panels, panel is for reference only

Connection Diagram





5 IN 1

Analog / AHD / CVI / TVI 2.0 / TVI 3.0 / Network



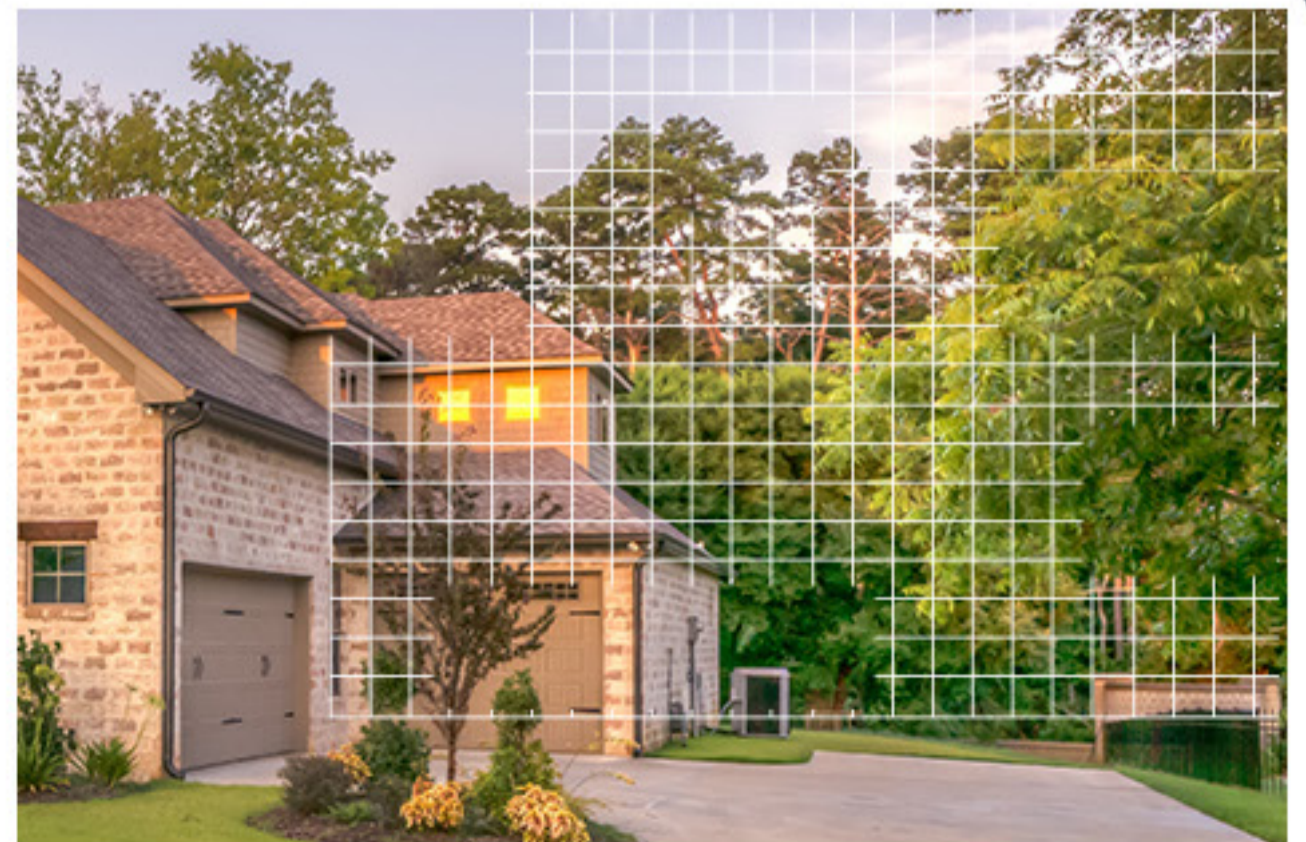
4CH / 8CH / 16CH



Motion Detection



1 SATA Hard Disk
Up to 8TB



H.265/H.265+

Longse



Full Color AOC XVR Kits

Longse



Full Color AOC XVR Kits

Longse



Full Color AOC XVR Kits

Longse



Full Color AOC XVR Kits

Longse

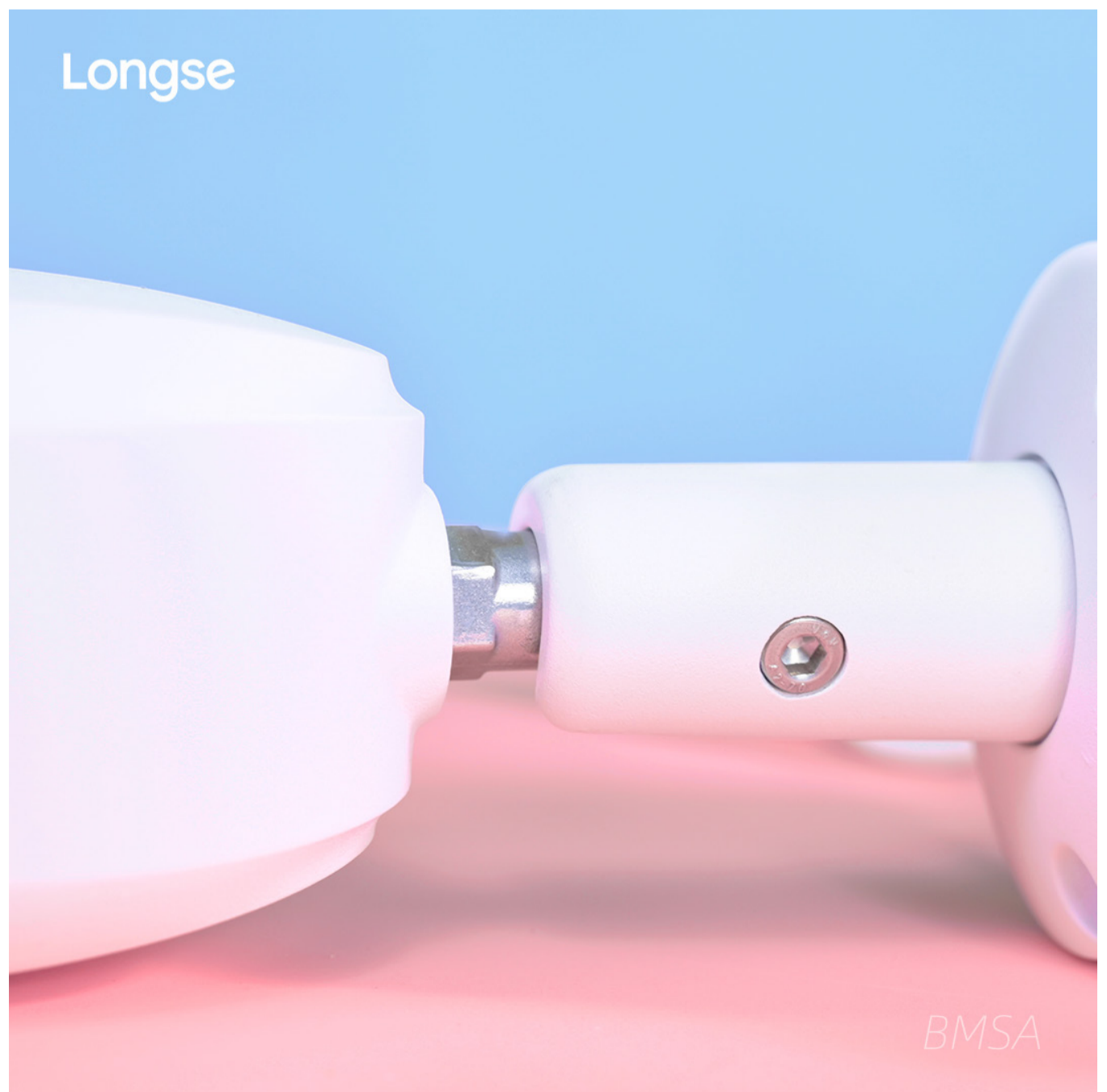


Full Color AOC XVR Kits

Longse



Full Color AOC XVR Kits



Longse



CMLB

Longse



CMLB

Longse



CMLB

Longse



CMLB

Longse



CMLB

Longse



CMLB

Longse



BMMB

Longse



BMMB

Longse



BMMB

Longse



BMMB

Longse



BMMB

Longse



BMMB

Longse



CMSA

Longse



CMSA

Longse



CMSA

Longse



CMSA

Longse



CMSA

Longse



CMSA

What is IPv4/IPv6?

THE FACTS OF SECURITY

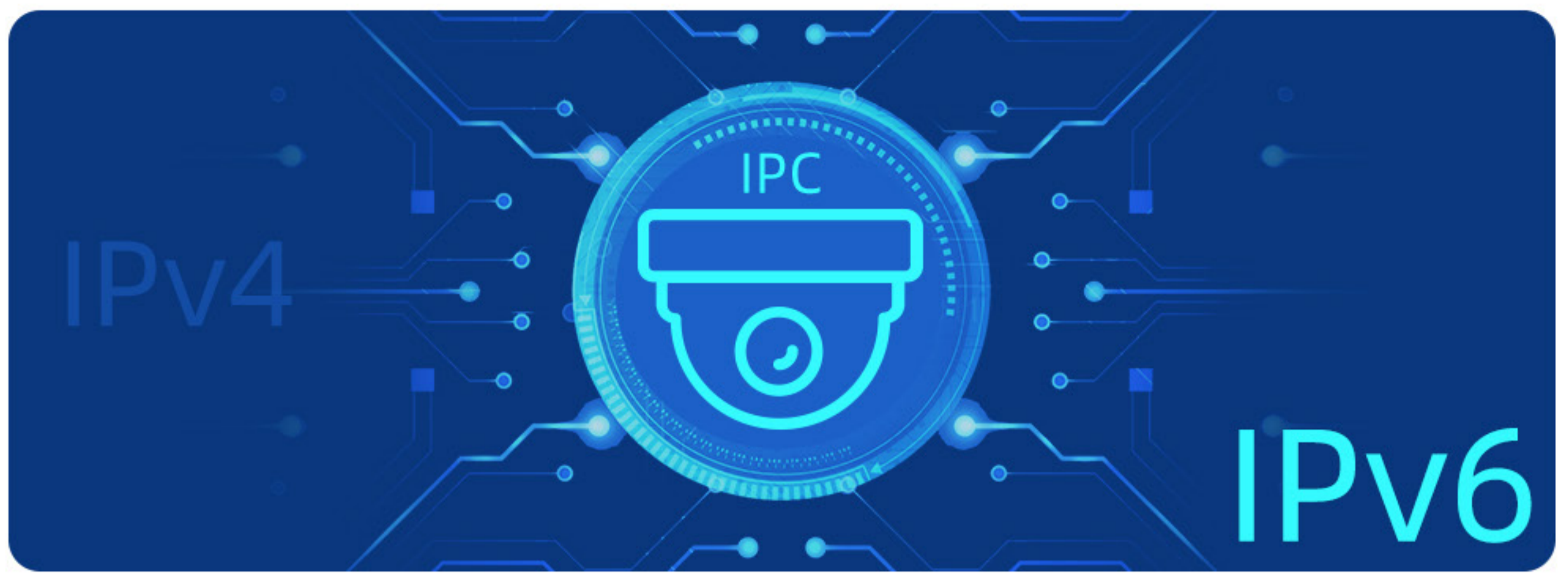
Internet Protocol version 4 is the fourth revision of the Internet protocol in the development process and the first widely deployed version of the protocol. IPv6 is the successor to the first addressing infrastructure of the Internet, Internet Protocol version 4 (IPv4).

IPv4

vs

IPv6

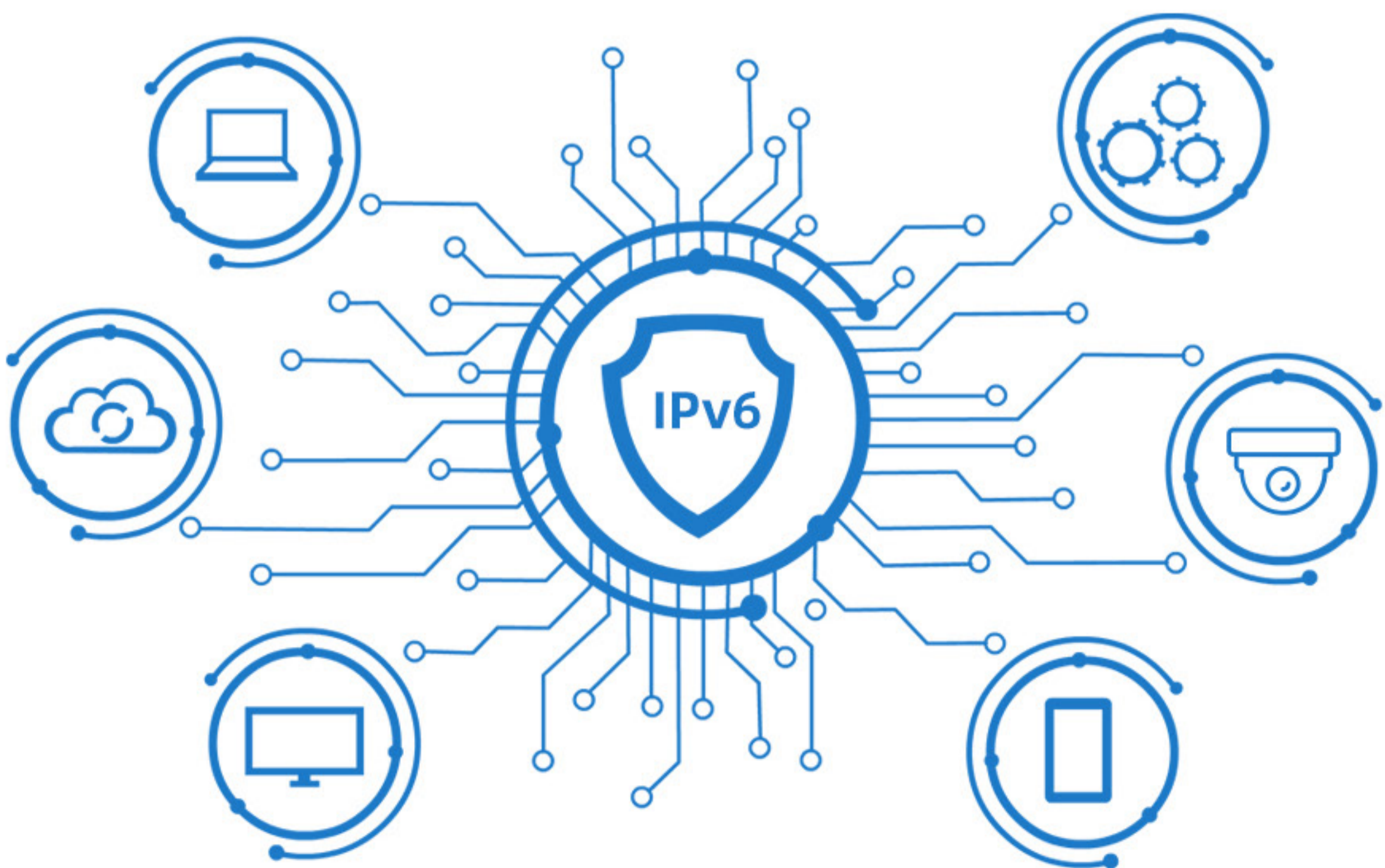
IP addresses are included in the packet header to indicate the source and the destination of each packet. The IP address of the destination is used to make decisions about routing IP packets to other networks. So, the IP camera can be accessed via an IP address.



Space & Security

In contrast to IPv4, which defined an IP address as a 32-bit value, IPv6 has a size of 128 bits. Therefore, in comparison, IPv6 has a vastly enlarged address space.

When using the IPv6 network, the user can encrypt the data at the network layer. So, compared with IPv4, IPv6 is more secure.



Key benefits to IPv6 include:

- * No more NAT (Network Address Translation)
- * Auto-configuration
- * No more private address collisions
- * Better multicast routing
- * Simpler header format
- * Simplified, more efficient routing
- * True quality of service (QoS), also called "flow labeling"
- * Built-in authentication and privacy support
- * Flexible options and extensions
- * Easier administration (no more DHCP)



References:

1. https://en.wikipedia.org/wiki/IPv6_address
2. <https://www.thousandeyes.com/learning/techtutorials/ipv4-vs-ipv6>

Longse

More secure, More intelligent



FACEBOOK



LINKEDIN



TIKTOK



TWITTER



WECHAT



YOUTUBE



WEBSITE